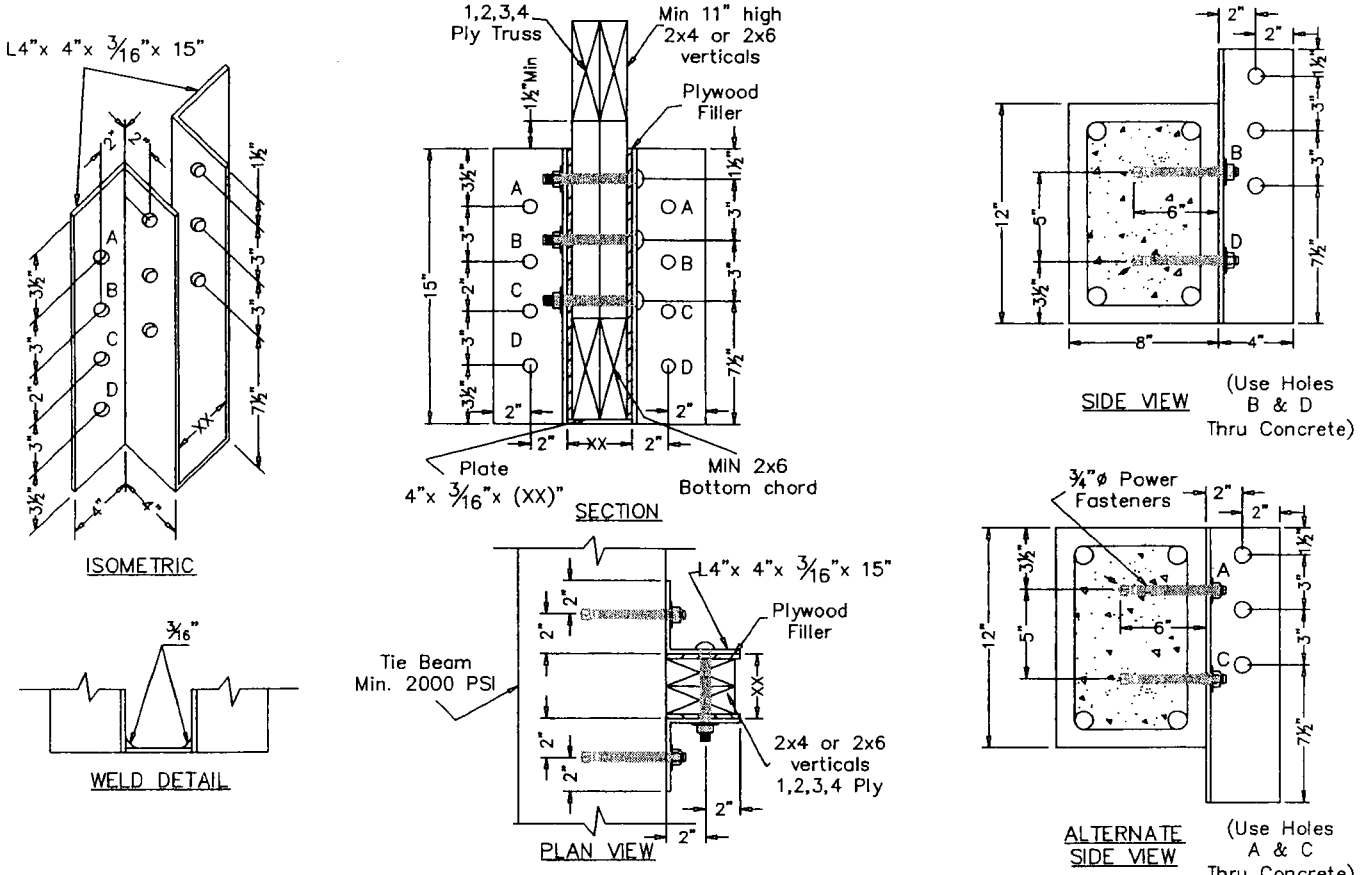


# Wood to Concrete Truss Hangers NVFH0 - 15

Wood to Concrete

Heavy Welded Connectors

Product Code	PLYS	XX (in)	Allowable loads (lbs)					
			F <sup>c</sup> = 2000 psi.		F <sup>c</sup> = 2500 psi.		F <sup>c</sup> = 3000 psi.	
			Gravity	Uplift	Gravity	Uplift	Gravity	Uplift
NVFH01-15	1	1 3/4"	7400	7400	7500	7500	7500	7600
NVFH02-15	2	3 1/2"	7400	7400	7500	7500	7600	7600
NVFH03-15	3	5 1/2"	7400	7400	7500	7500	7600	7600
NVFH04-15	4	7"	7400	7400	7500	7500	7600	7600
NVFH05-15	5	8 1/2"	7400	7400	7500	7500	7600	7600



## Structural Notes: Wood to Concrete connectors

- 1) All design conforms to 2014 FBC and 2015/2012 IBC and IRC and NDS 2012.
- 2) Structural steel shall conform to ASTM A36, yield strength 36000 psi. All bolt holes are 13/16" diameter.
- 3) All welding shall be minimum 3/16" with E70 electrodes and shall conform to latest AISC/AWS codes. All welds shall be fillet welds.
- 4) All Power Fasteners wedge bolt anchors shall be per manufacturer's published information. Minimum anchor diameter is 3/4" and anchor embedment shall be 6".
- 5) Uplift values in concrete shown are reduced for bolt spacing and edge distance. Power Fasteners are used without 33% increase in allowable values.
- 6) All bolt values in wood conform to NDS for Southern Pine, G=0.55. Values for other species shall be adjusted as per NDS.
- 7) Bolts shall not penetrate Truss Top and bottom chord and shall only be through Truss Verticals.
- 8) This connector shall only be used for wood members loaded parallel to grain.
- 9) Steel stress is not increased by 33%.
- 10) Provide plywood shims to close the gap between carried truss and steel connectors to prevent bending of bolts.
- 11) All products are painted Royal Blue for easy identification.
- 12) Use only 2 bolts each side thru concrete, either A & C or B & D.

Vipin N. Tolat, P.E.  
(Civil)  
FL. Reg. #12847

15123 Lantern  
Creek Lane  
Houston, TX  
77068