

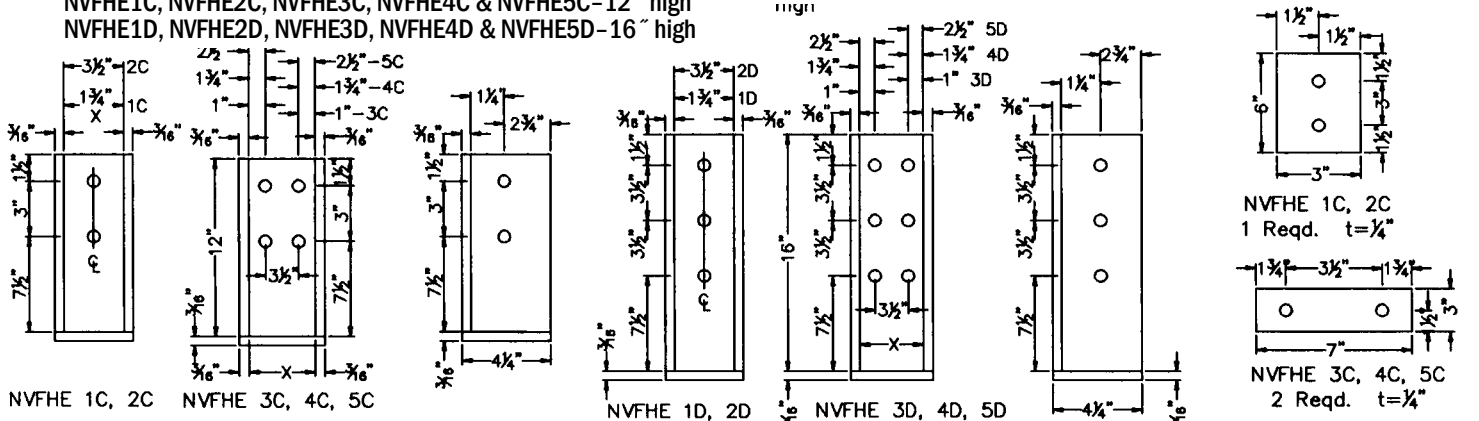
Wood to Wood Truss Hangers NVFHE

Wood to Wood

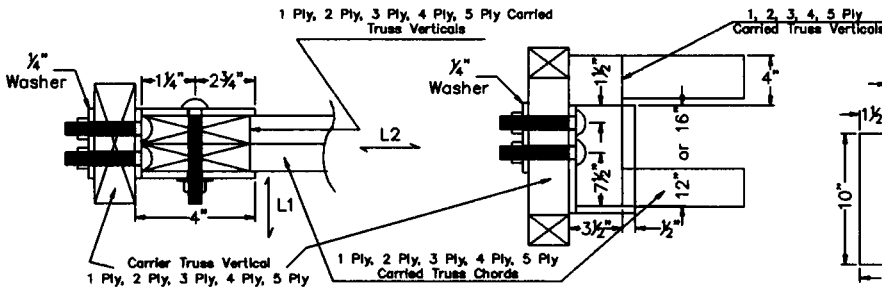
Heavy Welded Connectors

Carrier Truss Verticals	Carried Truss	Allowable Lateral Loads (lbs.)							
		12" High				16" High			
		1 Ply NVFHE1C	2 Ply NVFHE2C	3 Ply NVFHE3C	4 & 5 Ply NVFHE4C, 5C	1 Ply NVFHE1D	2 Ply NVFHE2D	3 Ply NVFHE3D	4 & 5 Ply NVFHE4D, 5D
1PLY 1 - 2x6	L1	510	865	1135	1730	765	1300	1700	2595
	L2	890	1790	2390	2690	1330	2680	3580	4030
2 PLY 2 - 2x6	L1	870	1340	1905	2675	1310	2010	2860	4015
	L2	890	1790	2390	2690	1330	2680	3580	4030
3 PLY 3 - 2x8	L1	1055	1546	2295	3095	1585	2320	3440	4640
	L2	890	1790	2390	2690	1330	2680	3580	4895
4 and 5 PLY 4 - 2x8 5 - 2x8	L1	1136	1632	2460	3265	1705	2450	3690	4895
	L2	890	1790	2390	2690	1330	2680	3580	4030

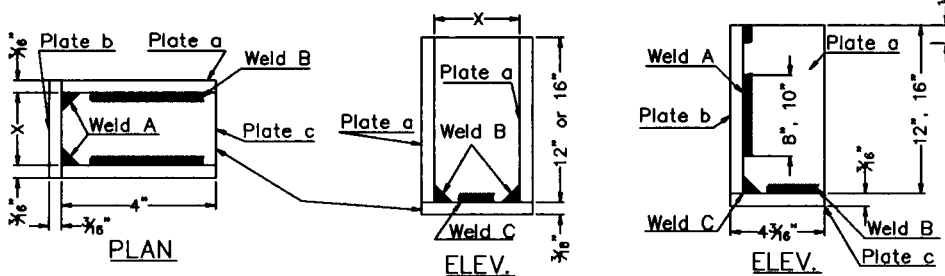
NVFHE1C, NVFHE2C, NVFHE3C, NVFHE4C & NVFHE5C - 12" high
 NVFHE1D, NVFHE2D, NVFHE3D, NVFHE4D & NVFHE5D - 16" high



- 1 Ply NVFHE1C, 1D X=1 3/4"
 - 2 Ply NVFHE2C, 2D X=3 1/2"
 - 3 Ply NVFHE3C, 3D X=5 1/2"
 - 4 Ply NVFHE4C, 4D X=7"
 - 5 Ply NVFHE5C, 5D X=8 1/2"
- 1 Req.
NVFHE 3D, 4D & 5D t=1/4"
- 1 Req.
NVFHE 1D & 2D t=1/4"



WELD & PLATE DETAILS (Wood to Concrete & Wood to Wood)



Weld A: 8" long for 12" high & 10" long for 16" high plates and 1/2" at top.
 Weld B: Continuous 3/16" Fillet.
 Weld C: Continuous 3/16" Fillet.

Plates a: 4"x 3/16"x 12" or 16"
 Plate b: (X+1/2")x 3/16"x 12" or 16"
 Plate c: (X+1/2")x 3/16"x 4 3/16"

NVFHE	Carried Truss Verticals
1C, 1D	2 x 4
2C, 2D	2 x 6
3C, 3D	2 x 8
4C, 4D	2 x 8
5C, 5D	2 x 8

For structural notes, see page 30

Vipin N. Tolat, P.E.
 (Civil)
 FL. Reg. #12847

15123 Lantern
 Creek Lane
 Houston, TX
 77068